



The Republic of Uganda



Tourism Statistical Bulletin

Tourism Performance Highlights

Tourism Performance Highlights

Foreign Tourist Arrivals

2015

1,302,802



2.9% Compared to 2014



National Park Visitation 2016

245,725



14% Compared to 2015

Visitation to Uganda Museum 2015

102,890



-8.3% Compared to 2014



Visitation to Uganda Wildlife Education Centre (UWEC)

307,421



1.1% Compared to 2014

Visitor Exports 2016

UGX2,592.9bn (USD764.9m)

15.7% of total exports

Source: WTTC



Investment 2016

UGX1,055.4bn (USD0.3bn)

4.9% of total investment

Source: WTTC

Employment: Total Contribution 2016

504,000 jobs

5.8% of total employment

Source: WTTC



Employment: Direct Contribution 2016

191,000 jobs

2.2% of total employment

Source: WTTC

GDP: Total Contribution 2016

UGX6,171.5bn (USD1.8bn)

6.6% of GDP

Source: WTTC



GDP: Direct Contribution 2016

UGX2,423.6bn (USD0.7bn)

2.6% of total GDP

Source: WTTC

Bed Occupancy Rate

46.2 percent



Room Occupancy

47.6 percent



MTWA's Statistical Bulletin



The Republic of Uganda

MTWA Statistical Bulletin

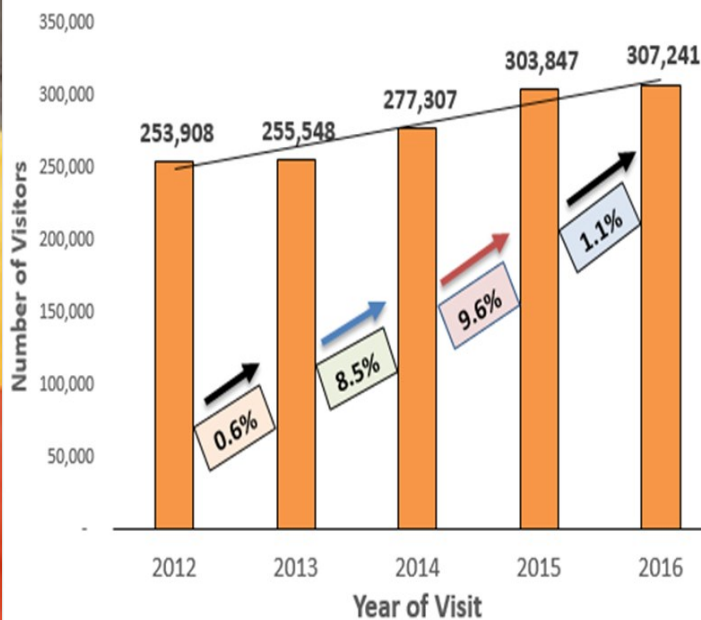
March 2017

Visitation to Uganda's Zoo, the Uganda Wildlife Education Centre (UWEC) increases in 2016

Performance of the Uganda Wildlife Education Centre

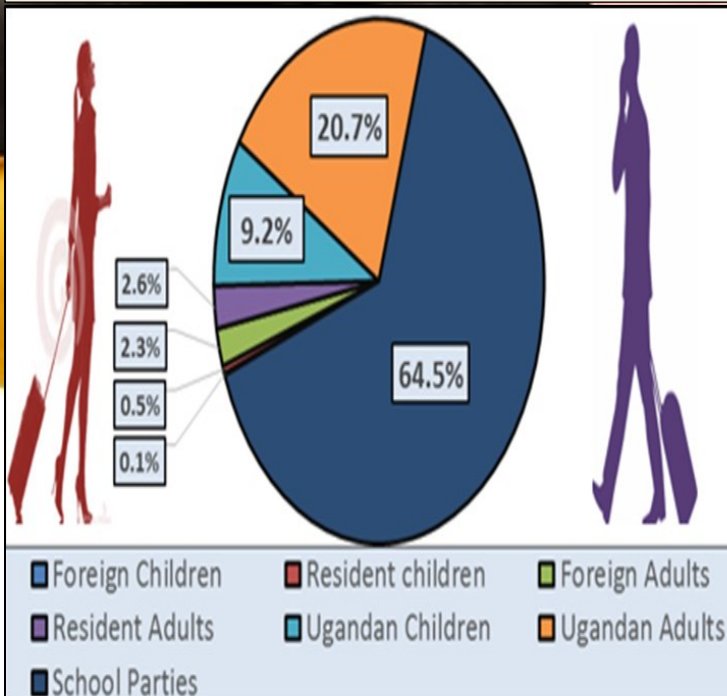
According to UWEC, visitation to the centre grew by 1.1% in 2016 to reach 307,241. This increase was largely attributed to the strong outreach conservation Education Programme that makes the centre pivotal in supporting wildlife conservation in the wild. The category of Students contributed most to this performance having grown from 162,803 in 2012 to 198,210 visitors in 2016.

Number of Visitors to the National Parks, 2014-2016



Visitors to Uganda Wildlife Education Centre by Category

Percentage share of Visitors to UWEC by Category, 2016



The School Groups maintained the highest share of Visitors to Uganda Wildlife Education Centre. This is explained by the fact that the Center is a fun and exciting place to see and learn about the animals of Uganda and the ecosystems in which they live.

Ugandan Adults and Ugandan Children followed with relatively higher proportions of the total visitor share at the Centre at 20.7 percent and 9.2 percent respectively.

Inside this issue:

VISITORS TO UGANDA WILDLIFE EDUCATION CENTRE

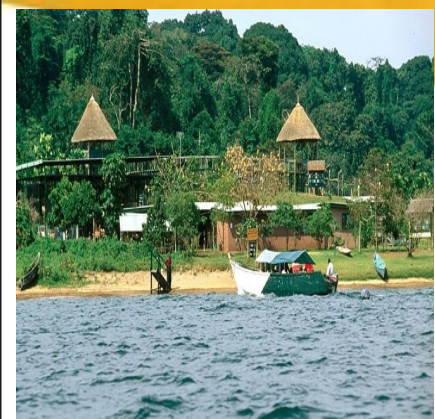
UWEC is not a zoo in a conventional sense and neither is it a Safari Park but it is a center where wildlife education is combined with leisure.



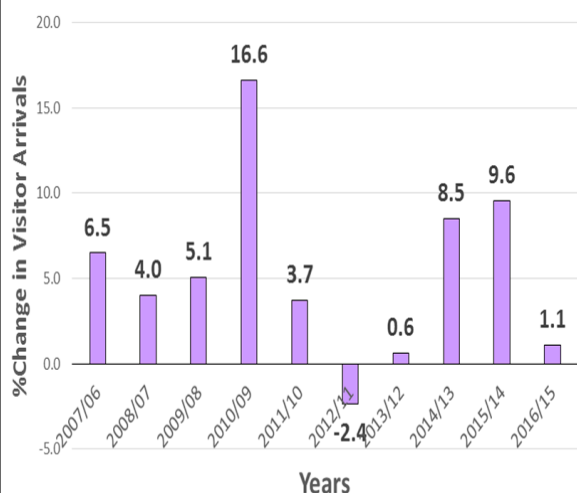
NGAMBA ISLAND

Ngamba Island, a peaceful home for Chimps

Surrounded by the peaceful waters of Lake Victoria, Ngamba Island Chimpanzee Sanctuary is home to 49 orphaned chimps rescued from throughout Uganda. Island facilities offer day trips and overnight trips which provide exceptional opportunity to closely observe and interact with these fascinating great apes in this



Percentage Change in Visitation to the Uganda Wildlife Education Centre (UWEC)



Over the last decade, UWEC has continuously recorded increases in visitation to the Centre. With the highest increase of 16.6 percent having been recorded in 2010 followed by 9.6 percent increase in 2015.

Despite witnessing increases over the years, 2012 saw the visitation decline by 2.4 percent.

Behind the Scene Experience



The popular Behind the Scenes tour means a visitor can watch or participate in the day-to-day activities of ensuring the welfare and good husbandry of animals in the zoo such as feeding and walking them. They include the Cheetah run, shoe bill greeting, Rhino Touch, Keeper for a day, Giraffe feeding and many more.

Seasonality of Visitation at Uganda Wildlife Authority

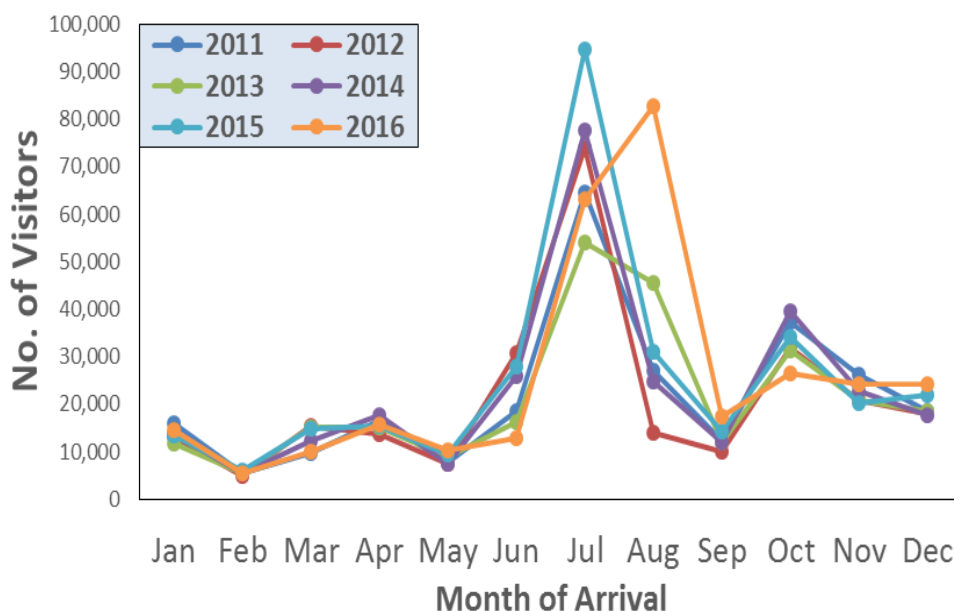
The Uganda Wildlife Education Centre commonly known as the Zoo is visited throughout the year.

The peak seasons for the Centre are in the Months of July, August and September, October, November, April and December.

April and December receive high numbers due to festive seasons and Easter Holidays.

However, also low numbers are received in January, February, March and September.

Seasonality of Visitation to UWEC by Category, 2016



School Programs



These include School Visits, Guided trips, Hands on Experience, self-guided tours, Workshops and internships.

Accommodation



The beauty about accommodation at the centre is that, one gets an opportunity to visit the animal and recreation park; listen to the occasional lion's roar, the owl's hoot or the gentle whisper of the wind through the trees, at no additional cost!

Party Venue



The Centre is endowed with a beach and gardens which offer space for boat cruise, parties and weddings.

MTWA PLANNING UNIT's Ngamba Island Experience

Ngamba island is a rescue and rehabilitation Centre for Chimpanzees. The Centre started with 19 chimps and has seen the numbers rising up to 49 chimps to-date. The proportion of the chimps at the centre is well balanced with 20 male and 29 female.

The Chimps are in custody of Veterinary doctors who take care of their health and provide clinic services.

The Planning Division onboard to Ngamba Island



Watching Stand



The Chimps can only be viewed once they have come for feeding. These chimps are fed three times a day on a balanced diet.

Resting Places



After a long day, the chimps spend their nights in structures that are raised above.

The Team on arrival at the island



It's about 45 minutes boat ride from Waterfront beach to reach the Ngamba island which is the peaceful home for the Chimpanzees. The Centre Provides Boats that ferry visitors to the island.

Welcome



Once you reach the island, one cannot afford to miss taking a photograph for memories near this signpost that welcomes you immediately you arrive from that boat cruise.



These Chimps like Humans also have leaders in their communities. The leader amongst the Chimps is always called the **Alpha** and is always the strongest male in the community.